

Florida Department of Health

Overdose Data to Action (OD2A)

Mary “Alex” Porter

OD2A Prevention Coordinator



Overdose Data to Action

CDC Funded - The Overdose Data to Action (OD2A) Grant awarded by the CDC, funded through the Florida Department of Health in Clay County, has three primary strategies:

- 1) Academic Detailing
- 2) Organizing the OD2A Task Force and task force subcommittees.
- 3) Operating the Community Paramedicine Program

Academic Detailing

- **NaRCAD:** National Resource Center for Academic Detailing
- “Academic detailing is interactive educational outreach to physicians to provide unbiased, noncommercial, evidence-based information about medications and other therapeutic decisions, with the goal of improving patient care.”



Academic Detailing

- Involves visiting with healthcare providers in Clay County to discuss the CDC's OD2A Initiative.
- Prescription Drug Monitoring Program (PDMP) allows providers to see what medications a patient is prescribed and avoid over-prescribing or co-prescribing with dangerous combinations of drugs.
- CDC's guidelines for best prescribing practices, tapering patients off medications when necessary, and nonpharmacologic alternatives for treating pain.

Visits to Date

- Academic Detailing visits started in July of 2022.
- 45 unique interactions between July and December.
- 20 in person visits year-to-date.
- Types of practices:
 - Primary Care
 - Dentistry
 - Psychiatry
 - OB/GYNs

Community Paramedicine Program



Community Paramedicine Program

CCFR is dispatched to an overdose call, overdose survivor is transported to one of our four EDs.

Every overdose survivor is offered free medication assisted treatment (MAT) and outpatient treatment through Clay Behavioral Health Center. All OD survivors are left with Narcan and resources for treatment.

If an overdose survivor refuses help now, they know where to get it when they are ready.

Community Paramedicine Program

1/27/2021 – 12/29/2021 = **81** Participants

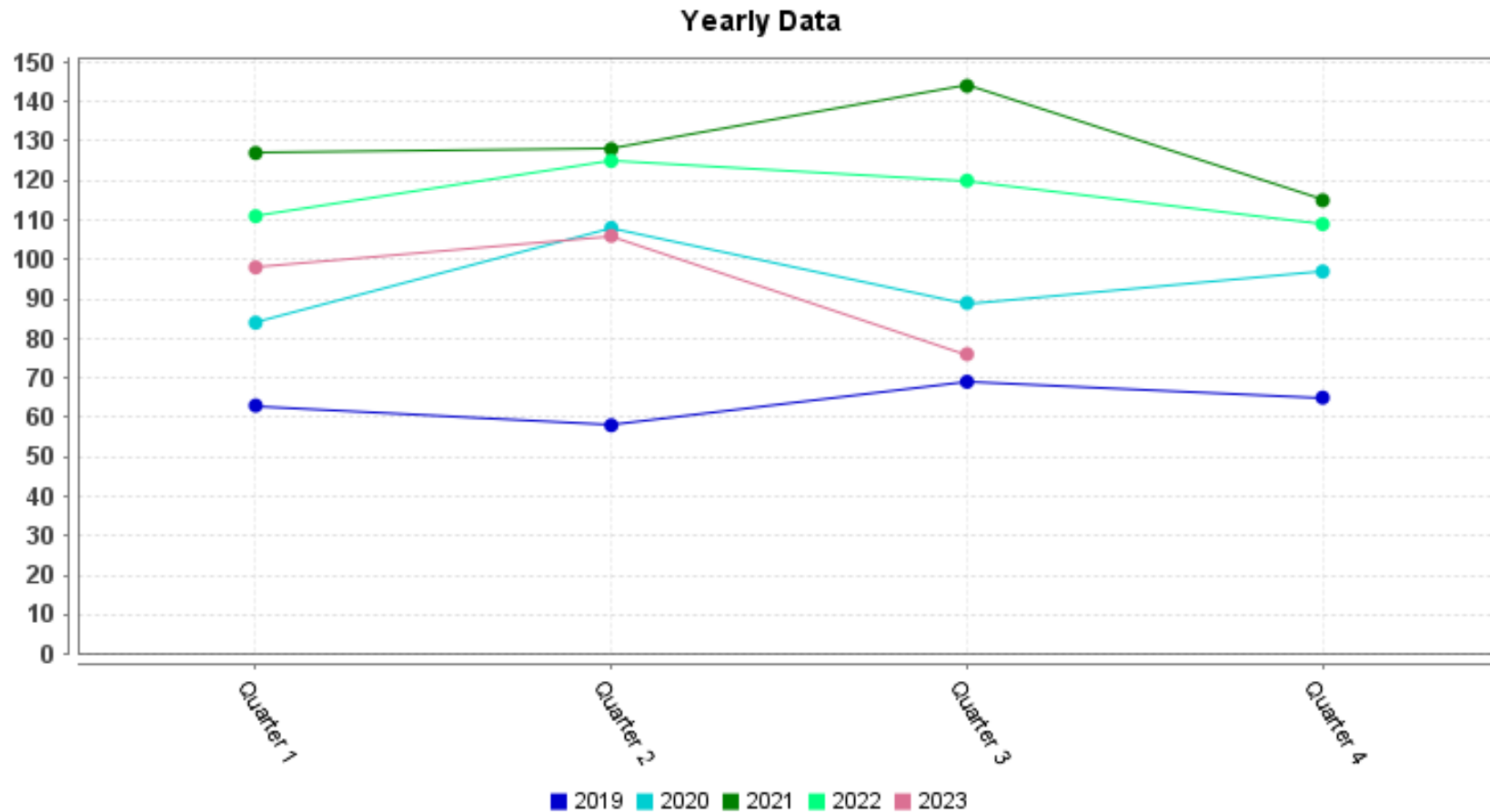
2022 – **114** Participants

2023 YTD as of 7/18 – **54** Participants

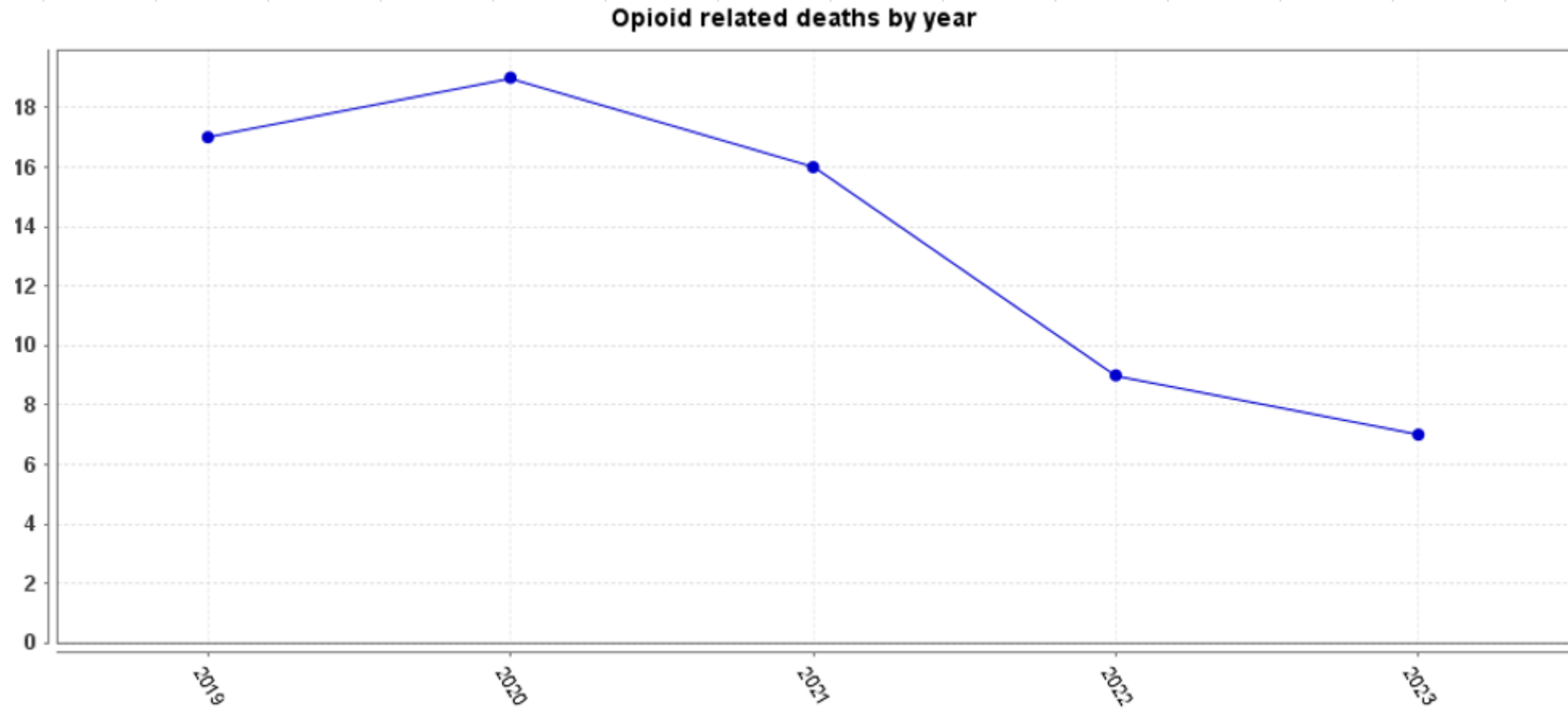
24/7 Truck Added in March 2023. **117** calls to dispatch since April 2023.

139 Clients currently receiving services from Clay Behavioral Health Center.

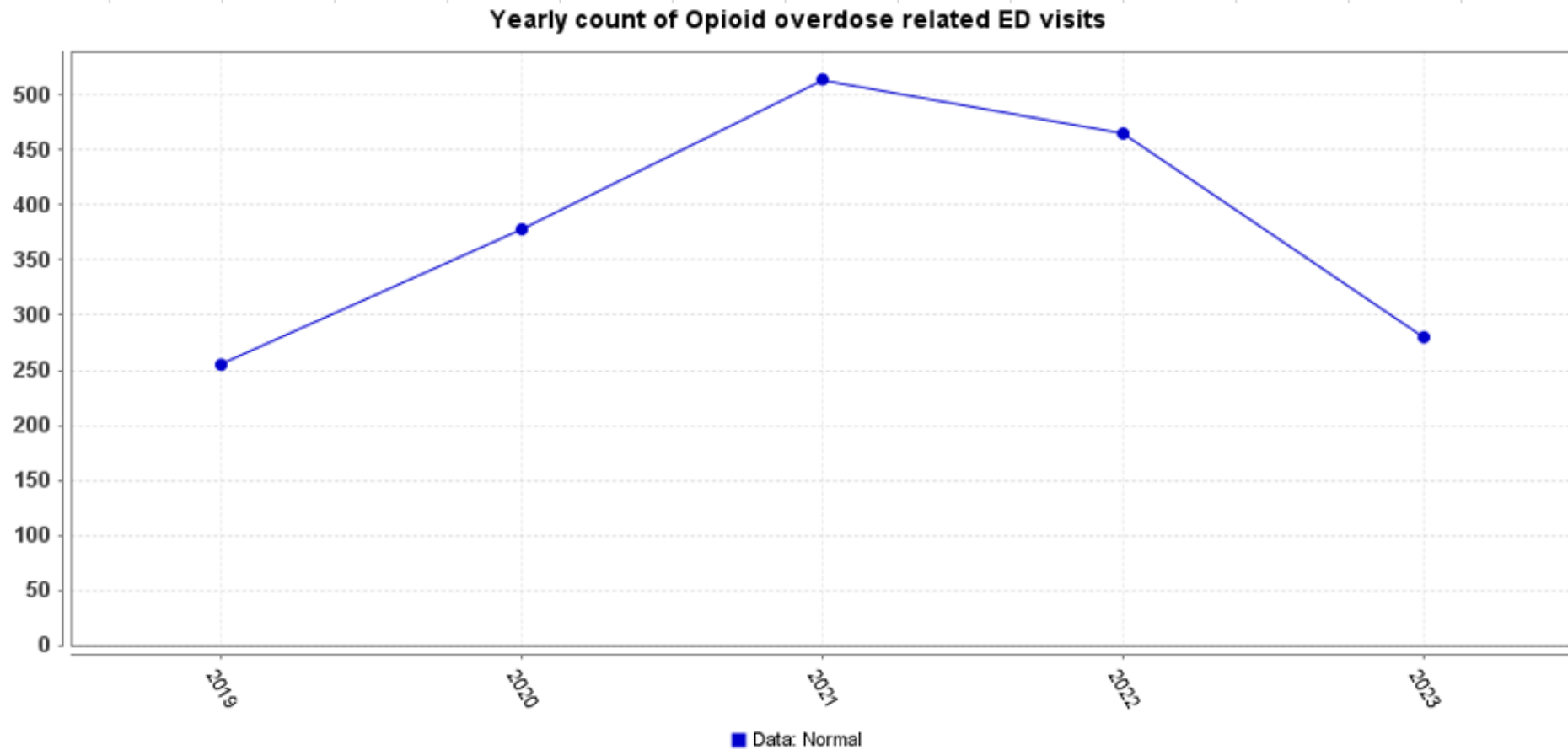
Opioid Overdose ED Visits - Essence



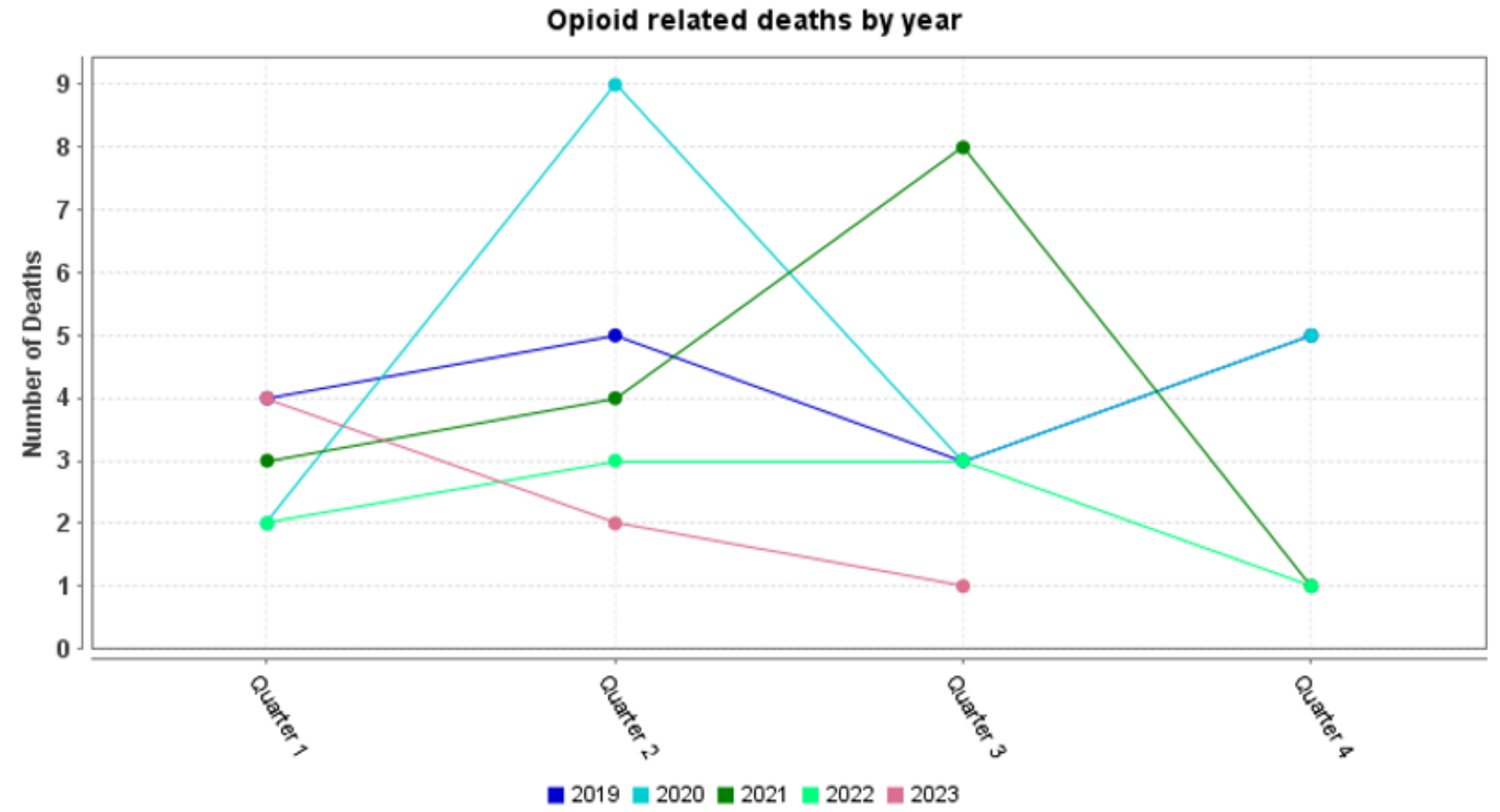
Opioid Deaths by Year - Essence



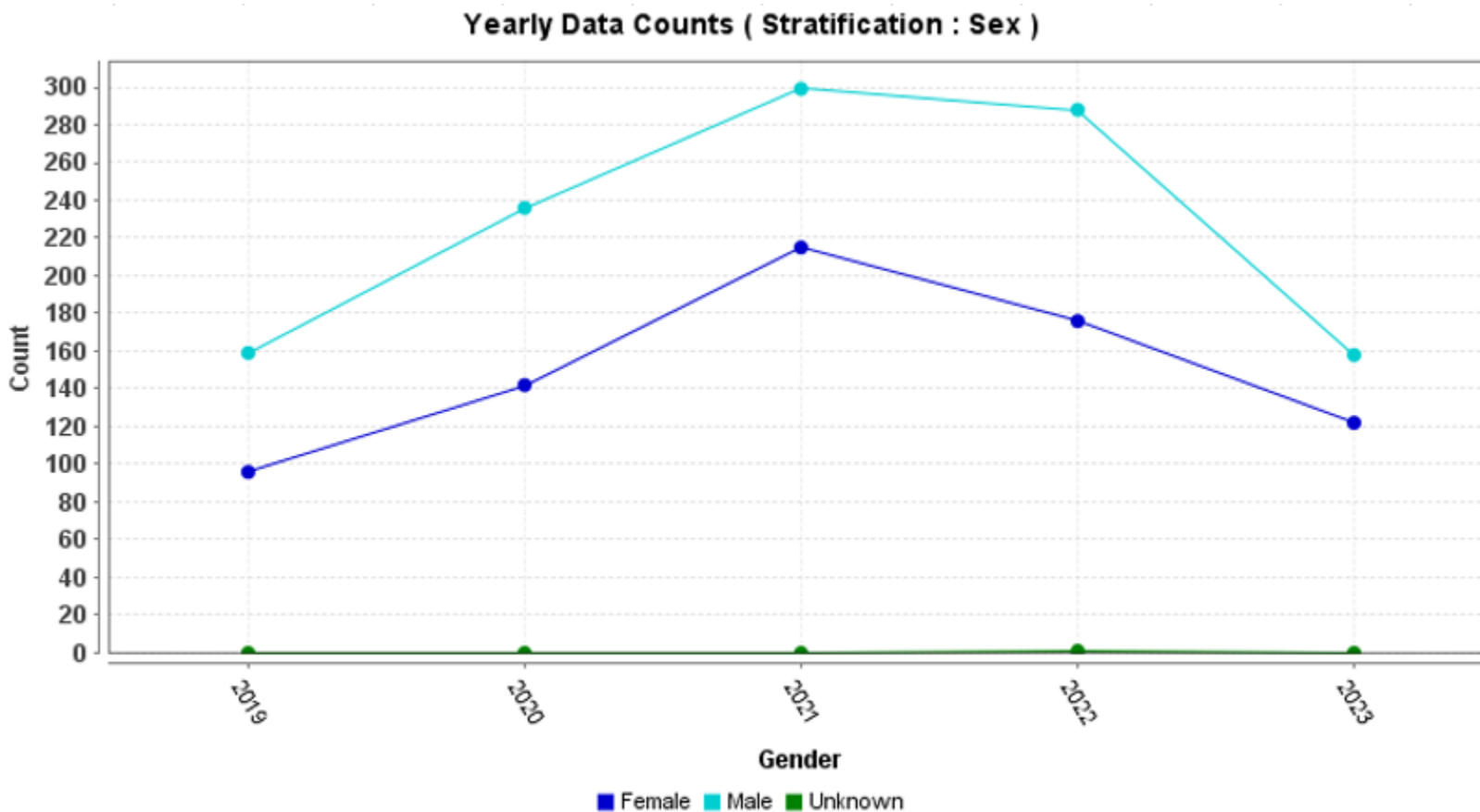
Opioid Related ED Visits - Essence



Opioid Deaths by Quarter - Essence



Yearly Overdose ED Visits by Sex



2019 ME Data

52 Total Opioid Related Deaths

- Under 19- 0
 - 20-29- 11
 - 30-39- 23
 - 40-49- 9
 - 50-59- 9
- 16 Females
 - 36 Males

2020 ME Data

65 Total Opioid Related Deaths

- Under 19- 1
 - 20-29 – 8
 - 30-39 – 18
 - 40-49 – 19
 - 50-59 – 17
 - 60-69 - 2
- 25 Females
 - 40 Males

2021 ME Data

62 Total Opioid Related Deaths

- Under 19 – 2
 - 20-29 – 11
 - 30-39 – 19
 - 40-49 – 14
 - 50-59 – 15
 - 60-69 - 1
- 21 Females
 - 41 Males

2022 ME Data

53 Total Opioid Related Deaths

- Under 19 – 1
 - 20-29 – 5
 - 30-39 – 14
 - 40-49 – 20
 - 50-59 – 7
 - 60-69 – 5
 - 70-79 - 1
- 18 Females
 - 35 Males

OD2A in Clay County



OD2A in Clay County



Left: With CCFR Captain Stephen Teal and CCSO Sherriff Michelle Cook at the annual Hammer and Hope outreach.



Right: With CCFR's Community Paramedicine team at the annual OD2A Conference.





NARCAN[®] (naloxone HCl)
NASAL SPRAY

- Mary “Alex” Porter
- OD2A Prevention Coordinator
- Community Health Ste 405
- (904)529-2831
- Mary.Porter@flhealth.gov